

GALR1 Antibody (Center)
Affinity Purified Rabbit Polyclonal Antibody (Pab)
Catalog # AP9346c**Specification**

GALR1 Antibody (Center) - Product Information

Application	FC, WB,E
Primary Accession	P47211
Reactivity	Human
Host	Rabbit
Clonality	Polyclonal
Isotype	Rabbit IgG
Calculated MW	38953
Antigen Region	174-200

GALR1 Antibody (Center) - Additional Information**Gene ID** 2587**Other Names**

Galanin receptor type 1, GAL1-R, GALR-1, GALR1, GALNR, GALNR1

Target/Specificity

This GALR1 antibody is generated from rabbits immunized with a KLH conjugated synthetic peptide between 174-200 amino acids from the Central region of human GALR1.

Dilution

FC~~1:10~50

WB~~1:1000

E~~Use at an assay dependent concentration.

Format

Purified polyclonal antibody supplied in PBS with 0.09% (W/V) sodium azide. This antibody is purified through a protein A column, followed by peptide affinity purification.

Storage

Maintain refrigerated at 2-8°C for up to 2 weeks. For long term storage store at -20°C in small aliquots to prevent freeze-thaw cycles.

Precautions

GALR1 Antibody (Center) is for research use only and not for use in diagnostic or therapeutic procedures.

GALR1 Antibody (Center) - Protein Information**Name** GALR1**Synonyms** GALNR, GALNR1

Function Receptor for the hormone galanin. The activity of this receptor is mediated by G proteins that inhibit adenylate cyclase activity.

Cellular Location

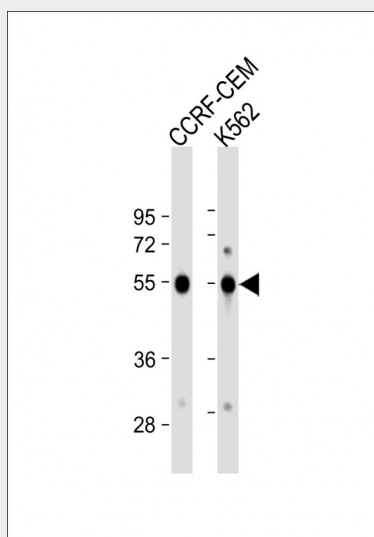
Cell membrane; Multi-pass membrane protein

GALR1 Antibody (Center) - Protocols

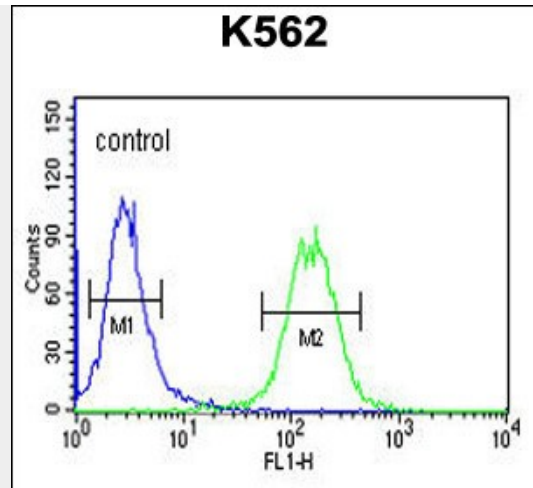
Provided below are standard protocols that you may find useful for product applications.

- [Western Blot](#)
- [Blocking Peptides](#)
- [Dot Blot](#)
- [Immunohistochemistry](#)
- [Immunofluorescence](#)
- [Immunoprecipitation](#)
- [Flow Cytometry](#)
- [Cell Culture](#)

GALR1 Antibody (Center) - Images



All lanes : Anti-GALR1 Antibody (Center) at 1:1000 dilution Lane 1: CCRF-CEM whole cell lysate Lane 2: K562 whole cell lysate Lysates/proteins at 20 µg per lane. Secondary Goat Anti-Rabbit IgG, (H+L), Peroxidase conjugated at 1/10000 dilution. Predicted band size : 39 kDa Blocking/Dilution buffer: 5% NFDM/TBST.



GALR1 Antibody (Center) (Cat. #AP9346c) flow cytometric analysis of K562 cells (right histogram) compared to a negative control cell (left histogram). FITC-conjugated goat-anti-rabbit secondary antibodies were used for the analysis.

GALR1 Antibody (Center) - Background

GALR1 elicits a range of biological effects by interaction with specific G-protein-coupled receptors. Galanin receptors are seven-transmembrane proteins shown to activate a variety of intracellular second-messenger pathways. GALR1 inhibits adenylyl cyclase via a G protein of the Gi/Go family. GALR1 is widely expressed in the brain and spinal cord, as well as in peripheral sites such as the small intestine and heart.

GALR1 Antibody (Center) - References

Borroto-Escuela, D.O. Biochem. Biophys. Res. Commun. 393 (4), 767-772 (2010)
Gratacos, M. Am. J. Med. Genet. B Neuropsychiatr. Genet. 150B (6), 808-816
Marroni, F. Circ Cardiovasc Genet 2 (4), 322-328 (2009)